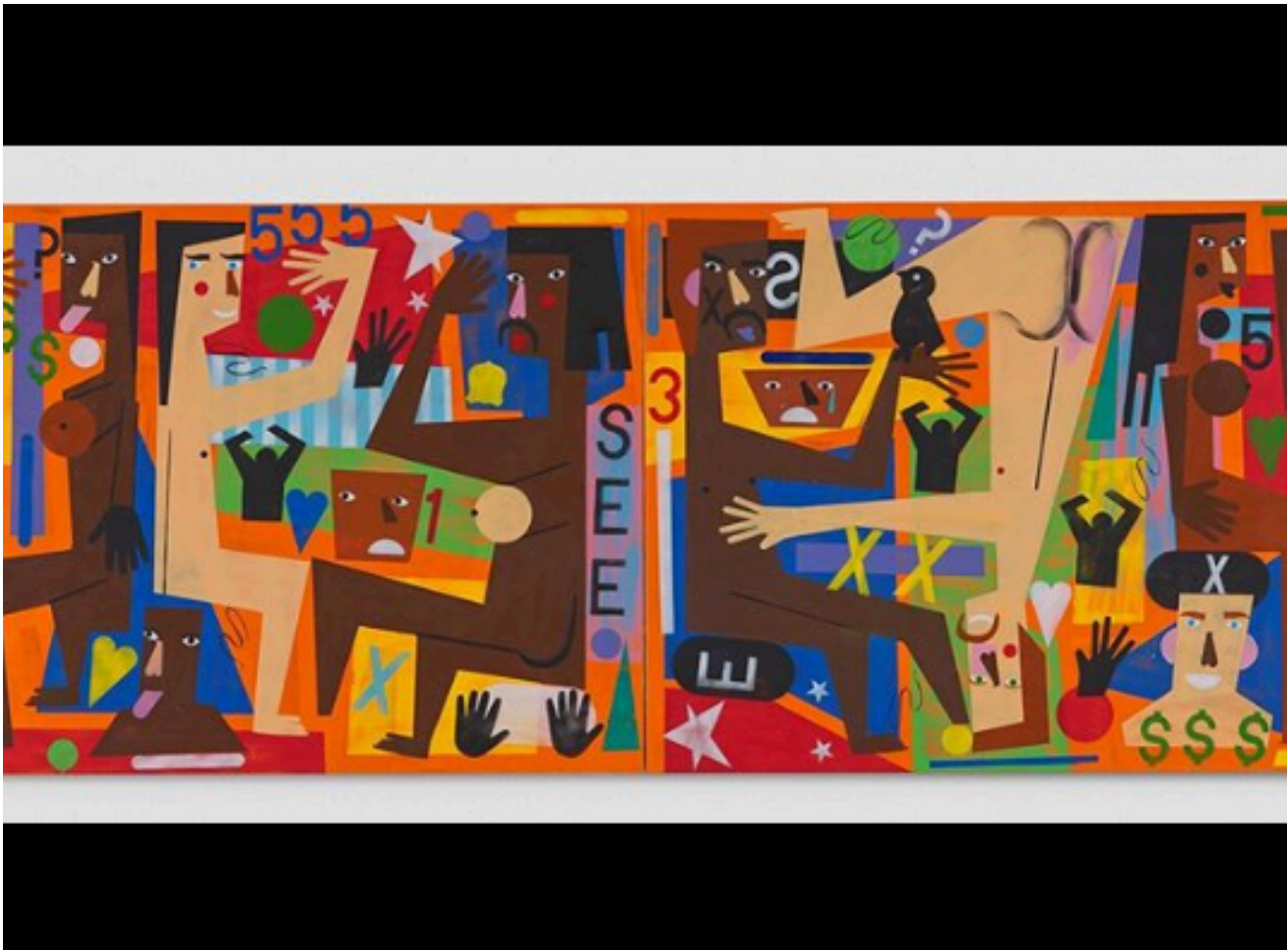


Nina Chanel Abney Continues to Ascend, and Her Curatorial Eye is On Point for "Punch" @ Jeffrey Deitch, Los Angeles

Jeffrey Deitch Gallery // June 29, 2019 - August 17, 2019

July 01, 2019 | in [Installation](#)



Nina Chanel Abney

Nina Chanel Abney has become one of the leading voices in emerging art over the last half-decade or so, with a career that has seen pivotal museum shows and gallery exhibitions. (*Juxtapoz* have been major supporters, with a cover story in [July 2016](#) and curating her work in *Juxtapoz x Superflat* later that year.) One of the great developments in her career as of late is her curatorial eye, with her second show of curation with [Jeffrey Deitch Gallery](#) having opened at his Los Angeles space this past weekend. *Punch* brings together thirty-three artists who examine contemporary culture and society through the lens of figuration.

Using painting, sculpture, and performance as acts of defiance, these artists explore how they can create a hybrid practice without adhering to historical labels while portraying a society immersed in new media and pop culture. *Punch* presents diverse approaches to contemporary figuration that defy traditional expectations. The show features a few artists recently featured in the pages of *Juxtapoz*: [Jeffrey Cheung](#), [Cheyenne Julien](#), [Monica Kim Garza](#), [Theresa Chromati](#), [Austin Lee](#), [Matthew Palladino](#), [Tschabalala Self](#) and [Henry Taylor](#).

To see a full roster of the artists in *Punch*, [click here](#).