

**Meleko Mokgosi**  
***Spaces of Subjection: Parts 1 to 5***  
**November 2 - December 22, 2023**



*Spaces of Subjection: Divinations I, 2023*  
 oil on canvas  
 12 panels:  
 5 panels at 9 x 12 x 1 inches  
 5 panels at 11 x 14 x 1 inches  
 2 panels at 12 x 16 x 1 inches  
 Inventory #MEM23.003



*Spaces of Subjection: Imaging Imaginations I, 2022*  
 oil on canvas  
 panel 1: 84 x 84 x 2"  
 panel 2: 96 x 96 x 2"  
 panel 3: 96 x 132 x 2"  
 panel 4: 96 x 72 x 2"  
 panel 5: 104 x 120 x 2"  
 panel 6: 96 x 72 x 2"  
 panel 7: 96 x 120 x 2"  
 panel 8: 96 x 72 x 2"  
 Inventory #MEM22.011



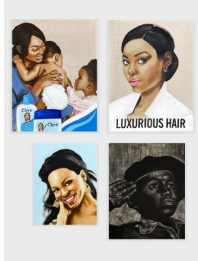
*Spaces of Subjection: Black Painting V, 2022*  
 oil on canvas  
 96 x 72 x 2 inches  
 Inventory #MEM22.006



*Spaces of Subjection: Imaging Imaginations V, 2023*  
 oil on canvas  
 Panel 1: 12 1/4 x 15 1/4 x 2 inches  
 Panel 2: 96 x 168 x 2 inches  
 Inventory #MEM23.001



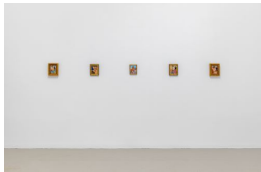
*Spaces of Subjection: Black Painting III, 2022*  
oil on canvas  
108 x 240 x 2 inches  
Inventory #MEM22.004



*Spaces of Subjection: Imaging Imaginations VI, 2023*  
oil on canvas, charcoal on panel  
4 panels:  
1 panel at 9 x 12 x 1 inches  
1 panel at 14 x 11 x 1 inches  
2 panels at 16 x 12 x 1 inches  
Inventory #MEM23.006



*Spaces of Subjection: Black Painting I, 2022*  
oil on canvas  
108 x 240 x 2 inches  
Inventory #MEM22.002



*Spaces of Subjection: Imaging Imaginations III, 2022*  
oil on canvas  
5 panels, 7 x 5 inches (each)  
Inventory #MEM22.013

*Spaces of Subjection: Black Drawing II, 2023*  
charcoal on linen, charcoal on panel  
tondos: 45 x 45 x 3/4 inches (each)  
Inventory #MEM23.007



*Spaces of Subjection: Black Drawing III, 2023*  
charcoal on paper  
diptych: 144 x 144 inches (overall)  
Inventory #MEM23.005



*Spaces of Subjection: Zone of Nonbeing, 2022*  
pigment transfer and permanent marker on canvas  
15 panels, each 84 x 84 x 2 inches  
Inventory #MEM22.007



*Spaces of Subjection: Black Drawing I, 2023*  
charcoal on canvas  
84 x 84 x 2 inches  
Inventory #MEM23.002



*Spaces of Subjection: Imaging Imaginations IV, 2022*  
various medium such as lithography, etching, screenprints and  
chine collé  
1/10, 10/10 (25 1/4 x 32 3/4 x 1 3/4 inches) framed  
2/10, 3/10, 7/10, 8/10, 9/10 (41 1/4 x 32 3/4 x 1 3/4 inches) framed  
4/10, 5/10 (32 3/4 x 25 1/4 x 1 3/4 inches) framed  
6/10 (41 x 52 7/8 x 2 inches) framed  
Edition 6 of 10, with 3AP, 1PP, 1BAT Inventory #MEM22.014.6